



KAMBALA



# Art and Design Showcase 2023

Instilling unwavering courage and curiosity to educate  
women of ambition, integrity and consequence.



# Collection Of Creative Works

## By Year 12 Students / Design and Technology



Adia Hedges P10-11



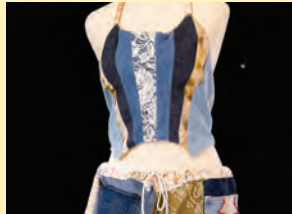
Alexandra Cole P12-13



Amelia Andrews P14-15



Ayla Denovan P16-17



Bo Oliver P18-19



Charley Hearne P20-21



Charlie Reed P22-23



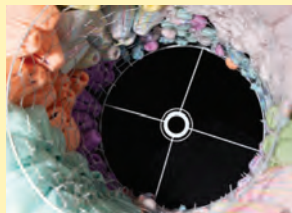
Danielle Lore P24-25



Hannah Montaser P26-27



Jemma Clyne P28-29



Lizzie Ricardo P30-31



Lucia Parker P32-33



Lucinda Beer P34-35



Meg Stratton P36-37



Mia Walls P38-39

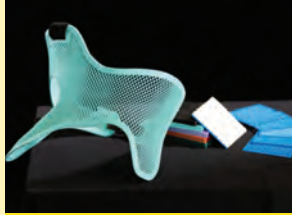
# Collection Of Creative Works

## By Year 12 Students / Design and Technology



Mila Folsom

P40-41



Milla Flintoft

P42-43



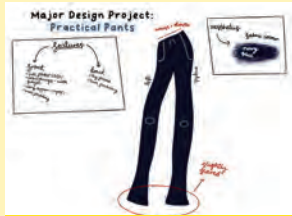
Olivia Gill

P44-45



Olivia Johns

P46-47



Olivia Okkerse

P48-49



Rebecca Caplan

P50-51



Sienna Haigh

P52-53



Sophie Ferguson

P54-55



Tayah Riley

P56-57



Zoe Zacharia

P58-59

# Collection Of Creative Works

## By Year 12 Students / Visual Art



Ada Mrvic P62-63



Adia Hedges P64-65



Amelia Andrews P66-67



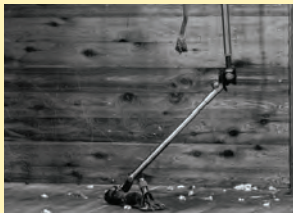
Ashley Friezer P68-69



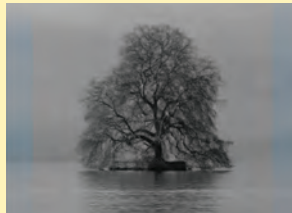
Bo Oliver P70-71



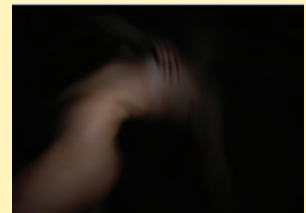
Charley Hearne P72-73



Cleo Baldwin P74-75



Cleo Lyon-Mercado P76-77



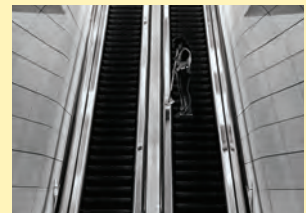
Elektra Kalantzis P78-79



Hannah Montaser P80-81



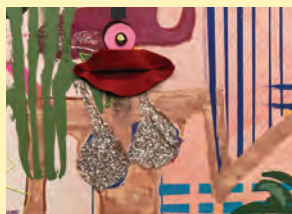
Iesha Gray P82-83



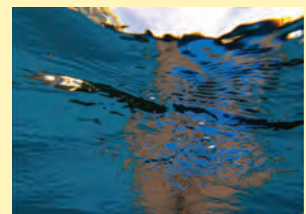
Jayde Novak P84-85



Jemima Salt P86-87



Lizzie Ricardo P88-89



Lily McCowan P90-91

# Collection Of Creative Works

## By Year 12 Students / Visual Art



Lulu Joye

P92-93



Meg Stratton

P94-95



Mila Folsom

P96-97



Nate Teen

P98-99



Olivia Johns

P100-101



Olivia Okkerse

P102-103



Peta Vassallo

P104-105



Pia Katasabaris

P106-107



Rebecca Caplan

P108-109



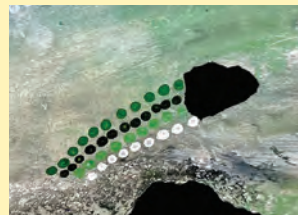
Sophie Ferguson

P110-111



Taliah Strang

P112-113



Tayah Riley

P114-115



Willow Wilson

P116-117



Zara Psirakis

P118-119



Zoe Dyson

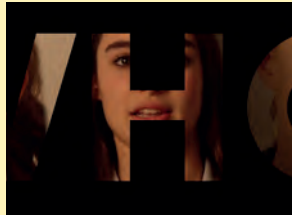
P120-121

# Collection Of Creative Works

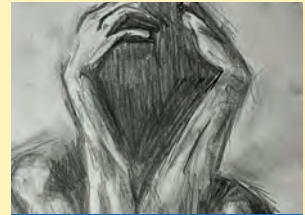
## By Year 12 Students / IB Art



Amber Hodde P124-125



Brooke Schreck P126-127



Chuo Shan (Kylie) Zhang P128-129



Crystal Xin P130-131



Phoebe Romeo P132-133



Yuhan Tang P134-135



Yujie (Sophia) Song P136-137



## Message From The Head Of Art And Design

This year has seen the production of outstanding student works that inspire us and demonstrate the huge potential of our young creatives. The 2023 Creative Showcase is an exciting celebration of imagination and innovation, with Design and Technology and Visual Arts students sharing their ingenuity across a range of artworks and design solutions.

Historically, our girls have exhibited an ability to create with courage and artistry; this year is no exception. Embracing the tradition of exploratory practice is at the heart of each girl's work in the Art and Design courses and every exhibit demonstrates a high quality of technical proficiency. This enthusiasm for the subjects illustrates the practices of students who are self-aware, community minded and sensitive to their world.

Each year the HSC and IB students work in parallel, to create bodies of work that touch on an enormous range of issues, traversing topics and themes that are both personal and universal. This year we see images and ideas that speak to themes of romance, endeavour, medical innovation and cultural celebration. Similarly, there are more intimate journeys of familial love, personal hardship and the ever-present discourse around the notion of identity and sense of place.

Design and Technology students have given us insight into the world of sustainable fashion, cultural customs, scientific study, and medical innovations, among other areas.

The Visual Arts course remains an important vehicle for self-expression, with works acknowledging influences of art history and providing glimpses of personal journeys via playful material experimentation. The International Baccalaureate Diploma course encourages our Visual Arts girls to make connections between their own lived experience and global issues relating to the world they inhabit.

The 2023 Creative Showcase is a hugely exciting culmination of student dedication, creativity and research. There are many hours of planning and material experimentation in each final work; evidencing the important role of shared communal creativity. Art and Design subjects are a vital component of learning, helping to develop confidence and courage while providing a stimulating balance in our girls' education. The sustained personal investment in Major Design Projects, Bodies of Work and extensive research folios has resulted in astounding products created by each of these mature practitioners. The Showcase is an inspiring manifestation and celebration of the Kambala Art and Design student's creative experience and I pass on my personal congratulations to the entire cohort.

As well as acknowledging every girl who has worked so hard to produce quality practical works, I would like to offer my sincere thanks to the incredible team who have supported the girls along the way. The 2023 Visual Arts teachers, Shona Goggin, Tina Bramis, Ariel Mekerpeled, Georgia Kite and Michael Clark have been incredibly enthusiastic stewards in the journey through the HSC and IB courses. Similarly, our technical support crew; Taleyah Hippi-Laurie, Olivia Thoma and Zoe Katsabaris have been key players in the success of our girls.

**Congratulations Year 12 on delivering an inspiring and exhilarating final exhibition**

**Drew Bickford**

Head of Art and Design





DESIGN AND TECHNOLOGY





Adia  
Hedges

### **Coral Reef-inspired sensory product**

Natural cotton warp cord, recycled fibres, reclaimed yarn, vibrating inser

My sustainable sensory-stimulating design intends to enhance the quality of life for neurodivergent children, with a subsidiary consideration of the product's ability to accommodate the needs of a secondary target market through its harmonious integration within a shared home environment. The utilisation of interdisciplinary textiles, blending traditional and modern methods of craft, is aimed at creating an immersive tactile experience. Mimetic of the natural environment I explore the visual appeal of coral reefs as an integral part of habitat preservation. Extending upon this, I embrace mindful consumption through the thoughtful selection of environmentally-friendly materials and practices, encouraging waste minimisation within a responsible and ethical design.





Alexandra  
Cole

### **Adaptable Aesthetic and Sustainable Mastectomy Bra with Filler**

Recycled Satin, Spandex and Bra and Biofoam

The goal of my design is to create a visually appealing and sustainable bra for women who have lost their breasts to breast cancer. It is designed to enhance wearers confidence and support the wearer through the different stages of surgery and recovery. The bra has numerous benefits to make it a more complementary bra. It reduces waste created by excess fabric by recycling and reusing old materials and by prosthetic fillers and implants. The soft lining soothes and accommodates the post-surgery sensations around the chest, while the outside of the bra is designed to be aesthetically pleasing. It has a front closing clasp and adjustable straps specifically to aid wearers comfort. The pink fabric is designed to reflect the breast cancer colour. The bra filler slips into a pocket of the bra, it is made out of biofoam which means that it is environmentally friendly and will biodegrade after a year or more of use. The ultimate goal of my product was to aid in the normality of life after breast cancer diagnosis and surgery.





Amelia  
Andrews

### **Dressing Gown**

Textiles, mixed media

Generalised Anxiety Disorder is the most common anxiety disorder among older adults. They fear the worst in every situation, even if that fear is unfounded. Anxiety problems in older adults are common, and may be caused by stressful or traumatic events, medications etc. I designed a weighted dressing gown which utilises varying senses to help reduce my grandmother's anxiety.







Ayla  
Denovan

### **Weighted Blanket**

#### Textile work

This blanket has been created to help reduce anxiety symptoms through pressure therapy and sensory aspects. The blanket weighs over 5kgs and is roughly the size of a double bed. It has a variety of stars with different colours and multiple different textures. The design uses an aesthetically pleasing, calming and simple design. It also has an extra soft material underneath to create a cozy and warm hug. The blanket cover is also machine washable and can be unattached from the weighted segment. This weighted blanket is made of long-lasting materials to ensure the blanket will have a long-life span without breaking down.





Bo  
Oliver

### **Revisable Outfit**

#### Textiles

My design is created to make an impact on the amount of textiles fashion that is consumed as well as being thrown into landfill across the world. The design is fully revisable allowing the user to wear 4 different outfit combinations in one, as well as being hand made from pre-loved textiles pieces such as scarves, shirts, jeans, and skirts. The design also has adjustable features on the tops straps, and lace up back, as well as at the pants waist band to fit a range of body types. Ensuring sustainable and affordable materials and resources were used throughout was a important consideration throughout.





Charley  
Hearne

### **Recycled Armchair**

Graphic Technology, Textile Technology.

To upcycle an arm-chair utilising recycled clothing. The result is to create a sustainable reading chair and children's book to encourage my younger sister to read more.





Charlie  
Reed

### **The Snuggie**

#### Textile Technology

To design and make a product which assists young people from the age of 15-24 create a normal sleeping schedule. I aim to create a pillow to assist with sleeping, lower stress levels and relieve anxiety.





Danielle  
Lore

### **Bottle Cap Purse**

Polypropylene bottle cap casing, Metal fixings, Polyester satin lining

I have created a functional purse that is made from recycled materials. The purpose of this design product is to inform consumers and users in broader society of the impact of plastic on our environment. The melted bottle caps create an aesthetic purpose for the plastic bottles whilst aiming to extend the life cycle of the normally disposable caps.





Hannah  
Montaser

### **Remembery Plates**

Laser technology, timber technology textile technology

The purpose of my Design and Technology Major Design projects was to design and construct personalised activities for my grandfather Pete, who is suffering from Dementia.





Jemma  
Clyne

### **Grips/ Handles**

Mixed media

I have designed cutlery specific for my grandfather who is suffering from Parkinson's disease to increase his feeling of independence and create ease of feeding and eating. Parkinson's disease can make it difficult for individuals to grip regular utensils and move food from the plate to their mouths. The purpose of the designed grips/handles which are removable are ideal because it allows for sturdy, adaptable grip.





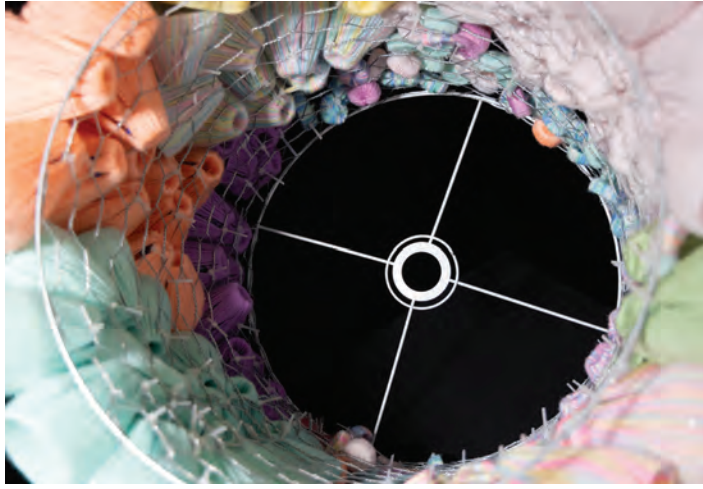
Lizzie  
Ricardo

### **Sustainable Lamp**

Recycled materials / Found objects

For my Design and Technology Major Design Project I have created a lamp shade inspired by Australia's coral reefs and waste products, raising awareness about pollution in our country's waterways. My lamp shade was constructed using repurposed materials that were gathered from my family farm. I used waste products such as bottle lids and plastic water bottles. These items have been wrapped to reflect forms and textures of coral reefs.







Lucia  
Parker

### **Sustainable Jewellery**

#### Recycled metals

The goal of my product design was to create contemporary jewellery pieces, made from recycled and reclaimed metal. Areas of focus were the improving of aesthetic appeal and reducing the stigma around recycled jewellery. My aim was to create a variety of jewellery pieces which may appeal to men and women one way or another. Design inspiration was taken from the forms of liquified metals, which are reflected in the organic shapes of the jewellery.



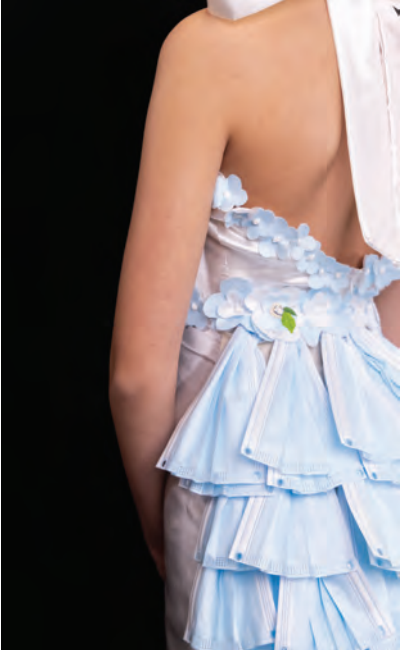


Lucinda  
Beer

### **Sustainable Textiles**

#### **Medical & Textile Technology**

Of the total amount of waste generated by health-care activities, 85% is general, non-hazardous waste. The remaining 15% is considered hazardous material that may be infectious, toxic or radioactive. Measures to ensure the safe and environmentally sound management of health care wastes can prevent adverse health and environmental impacts from such waste including the unintended release of chemical or biological hazards, including drug-resistant microorganisms, into the environment thus protecting the health of patients, health workers, and the general public. I have designed an installation utilising medical waste products to educate and inform relevant stakeholders about this important issue.





Meg  
Stratton

### **Sustainable Light**

#### Recycled materials

My pendant design blends past and present elements to create a sustainable and personalised lighting solution for my mother's kitchen. The wooden slab, dating back over 100 years, was discovered within the walls of my original house, while the light shades are made from recycled packaging paper. By incorporating these old and discarded materials, I aimed to bring new life to my old house and address the surplus of packaging paper at my farm resulting from frequent machinery deliveries.



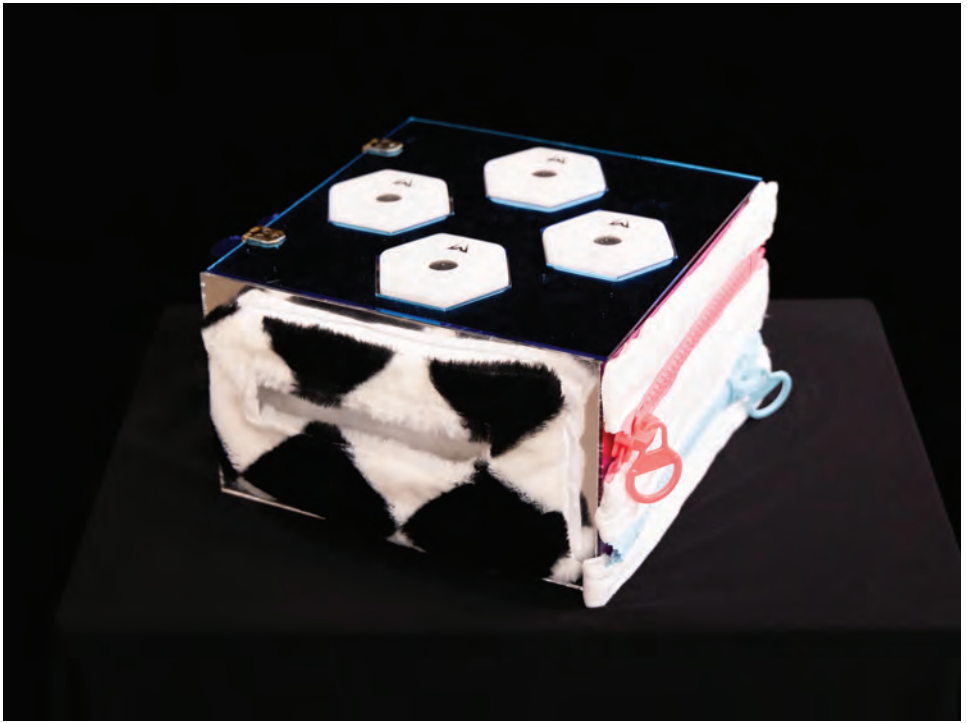


Mia  
Walls

### **Lunchbox**

Coding, Laser cutting

I was diagnosed with ADHD when I was 15, and I have always struggled in classroom environments. It created a lot of problems in relationships between teachers and my parents as I could not explain why I found it difficult to be attentive in class. I want to design a product that can assist other students.





Mila  
Folsom

### **Sustainable Textiles**

CAD, Laser Cutting Textile technology

To create a range of environmentally sustainable gender-neutral clothing. The range will maintain the quality of retail clothing for user needs while incorporating biodegradable and recycled fabrics into production to assist to eradicate the issue of synthetic fibres as well as the lack of inclusivity in clothing.



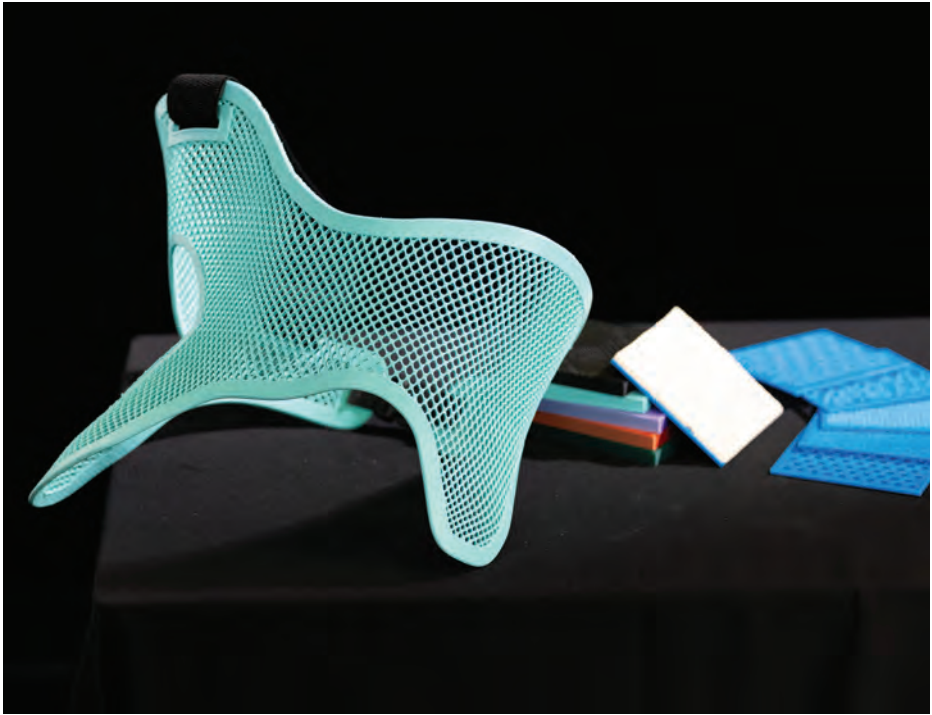


Milla  
Flintoft

### **Scoliosis Brace**

Laser Cutting, 3D printing

The redesign of a scoliosis brace, that aims to meet the need for a medically sound, fashionable, functional product, in which brace users can wear comfortably and confidently. The innovative brace design will elevate user experiences and thus increase patient willingness to meet their brace compliance hours.





Olivia  
Gill

### **Medicine Cabinet**

Timber technology and textile technology

Multiple sclerosis (MS) is a chronic illness that affects your central nervous system. Your nerve cells are surrounded by a layer called myelin. Myelin protects your nerves and helps them send signals quickly from your brain to the rest of your body. In MS, your immune system attacks the myelin layer and damages it. I have designed a cooling scarf and medical container specifically for my mother to help relieve her suffering from multiple sclerosis.





Olivia  
Johns

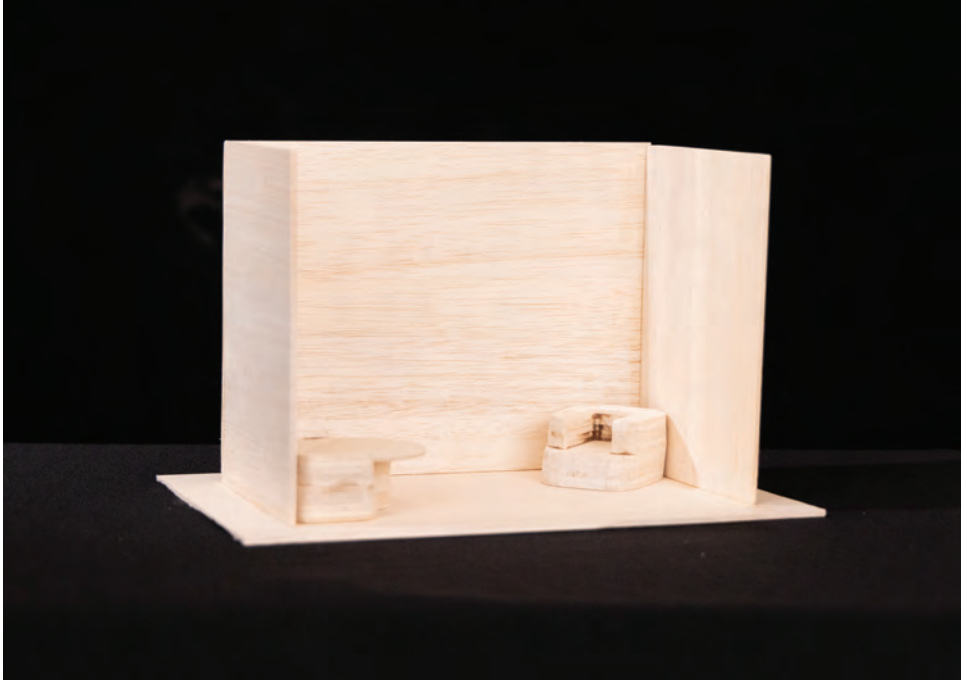
### **Safe Space**

#### **Balsa Wood**

My design is created to help students within Kambala stay focused and calm. The Safe Space is a space where students can retreat to in times of distress to relax.

The space uses minimalistic aesthetics to not overstimulate the already busy minds of students. The chosen furniture is relaxing while also practical to use while completing school work. The product is designed for students within Kambala ages 12-18 living with Autism Spectrum Disorder.







Olivia  
Okkerse

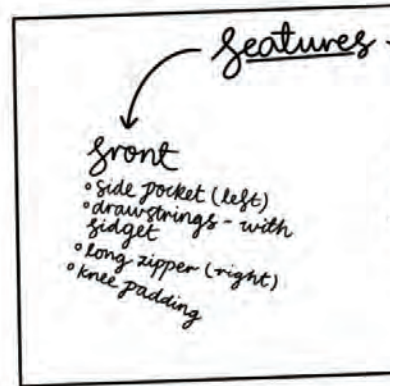
### Practical Pants

#### Textile Technology

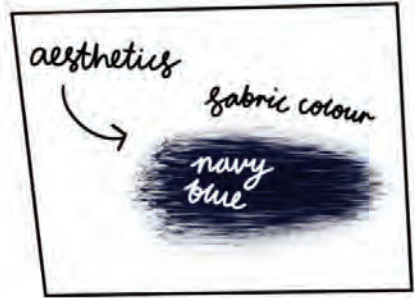
Due to personal circumstances, my cousin Rose has experienced prenatal cerebral palsy and this motivated me to explore design concepts that provide a solution to struggles involved with Cerebral Palsy disorder. Cerebral palsy is a congenital disorder of movement, muscle tone or posture, Rose struggles with the use of the left side of her body making normal tasks such as going to the bathroom significantly more difficult.

Rose will commence her high school journey and she can't access as much assistance.

## Major Des Practic



# Design Project: Casual Pants





Rebecca  
Caplan

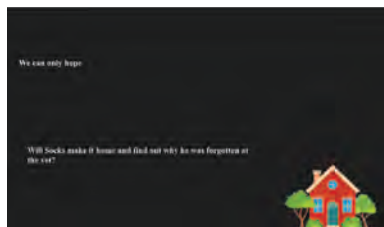
### **Educational Tool**

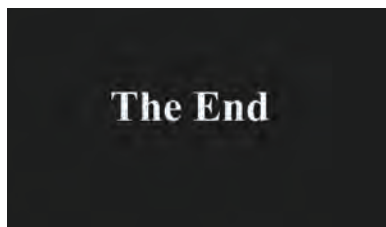
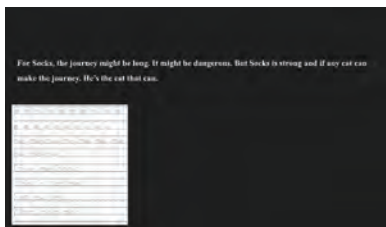
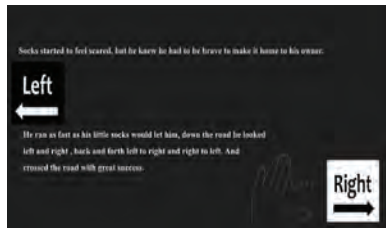
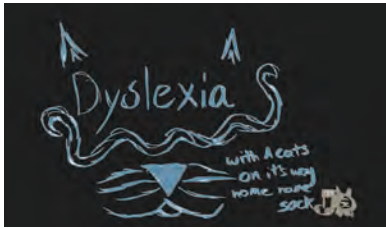
#### Audio-visual and Graphic Design

I have designed a film on dyslexia to debunk false assumptions and stereotypes. I have been identified as suffering from dyslexia.

Dyslexia is a condition of neurodevelopmental origin that mainly affects a person's ease with which a person reads, writes, and spells.

Writing fosters the ability to explain and refine one's ideas. My project will raise awareness and develop an understanding of what dyslexia is and how we can support people with this disability.





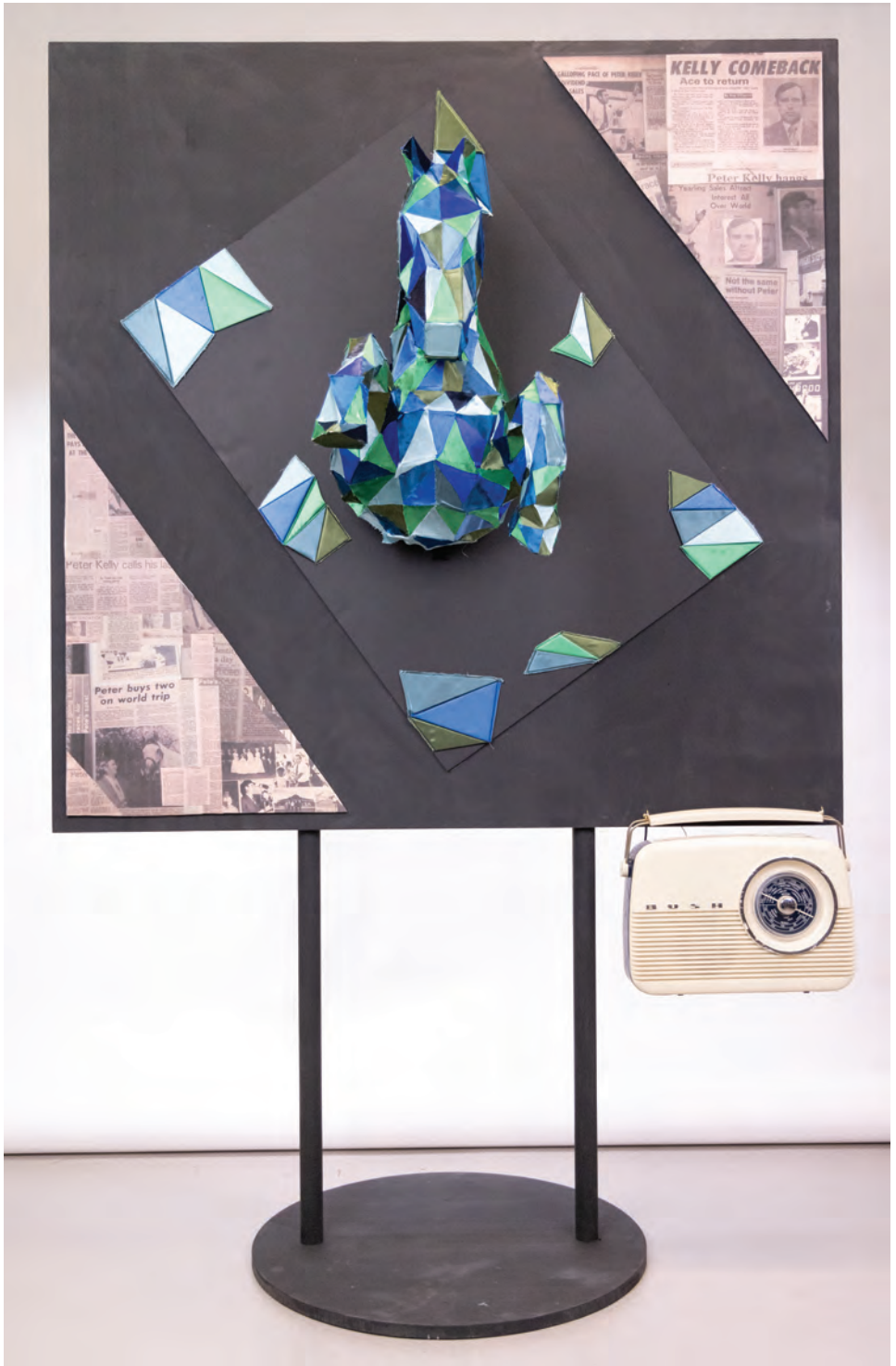


Sienna  
Haigh

### **Horse Sculpture**

Laser Cutting, timber and textile technology

My design has been created to provide my family with a tangible source of memorabilia for my late Grandfather Peter Kelly, by incorporating a range of design elements and aspects that reflect his career, family life and achievements. The product, in the form of a sculpture, reflects his passion for his career in horse racing. I have deviated from traditional aspects of memorabilia, and designed a product which stimulates happiness and appreciation of my grandfather and his life.





Sophie  
Ferguson

### **Functional Textile**

#### Reusable saddle cloth

Cotton blanket, wool batting, interfacing & re-purposed ribbons

The goal of my design is to repurpose the ribbons to create in to something special, for you and your horse to show off through the use of a saddle cloth.

My aim was to create a usable product, pleasing to the eye and to repurpose materials such as the competition ribbons I have won, and an old blanket. The ribbons are not used for any other purpose, after they have been awarded. These ribbons can end up in storage, donated or landfill, so repurposing them as a saddle cloth gives them a new life.

I have drawn inspiration from a number of craft and decor projects using the ribbons. Eg cushions, art works, blankets. The saddle cloth is a great way to showcase your achievements and hard work as well as making something practical and useful. I have also incorporated a recycled woollen blanket into my design as the backing fabric.





Tayah  
Riley

### **Wall Hanging**

#### **Woven Raffia**

The aim of my woven product is to create an object that is both decorative, functional and meaningful in relation to my Indigenous culture. I wanted to create a sense of connection to culture for the other Aboriginal girls with whom I live, in the school boarding house, as being away from home and family can be challenging.

In my raffia weaving piece I have used different materials to create multiple woven items and separate pieces as a wall decoration.





Zoe  
Zacharia

### **Timber Chair**

Timber technology

To design a chair that can be flat packed and folded to store easily, as it takes up minimal space, while being comfortable and aesthetically pleasing, perfect for events.







VISUAL ARTS





Ada  
Mrvic

### **Life's a puzzle**

#### Collection of Works

This body of work explores the themes of intergenerational family connection and those connections that inform my personal history and heritage. The combination of bright colour painting, graphite pencil drawing and laser cut images/ maps on timber puzzle pieces evokes a warm, reminiscent composition of familial history. The puzzle form is inspired by the Japanese art collective ChimPom's installation "It's the Wall World" (2014-15), where they cut puzzle pieces from the walls of different environments around the world, recontextualising them into an ongoing gallery installation. The puzzle pieces in my work depict a variety of personal and familial symbols and experiences to create a tapestry that connects different people, places, emotions and memories. Through the depiction of significant family members who I have unfortunately lost, the puzzle form and vines represent the physical connections that have formed and broken between people and places in my life, emphasising the metaphorical ones that continue to persist.





Adia  
Hedges

### **Sea, Swallow Me**

#### Painting

*Sea, Swallow Me* is a symbolic exploration of a relationship and bond between mother and daughter. The works are a semi-abstract observation of the mundanity of everyday life, critiquing the traditions of feminine domesticity.

Using the sea and waterways as a motif, the work explores the beauty of the ocean, but also its unforgiving nature. The works conflate ideas of the mother as nurturer while also underscoring potential dangers of these relationships.

The overlaid textiles and fibres intrude on the monochromatic hues; blue bottles and jellyfish suggest the sting of broken relationships and offer the possibility that something isn't necessarily as beautiful as it seems.





Amelia  
Andrews

**Float**  
Painting

*Float* explores the unity of the human form, showcasing the visual relationship and dissimilarity between the body, once positioned on the same plane. By displaying these forms in a shared environment surrounded by the absence of society's influence, the forms portrayed on the canvas are able to be judged not based on the attitudes inflicted by society's expectation of self, but instead by the authentic picturesque value the raw human body upholds. *Float* aims to challenge the viewer, promoting a discourse around the stigma of perfection.







Ashley  
Friezer

### **The responsive gaze**

#### Photomedia

In a society where the male gaze controlled societal perception of beauty is what determines self-worth and identity, the ways in which women represent themselves to the world, and to what extent they conform to the male gaze, is highly responsible for how they are perceived. Highlighting the relevance of ‘the gaze’ to female individuality. To represent the multifaceted nature of this topic I used collage to embody the different perspectives of females in different contexts. Using magazine cut-outs and old family photographs in combination with film photographs I took in order to create a holistic representation of the gaze allowing it to be analysed through multiple contexts/ time periods. Further, within my collages I represented the gaze through experimenting with the composition and the placement of the images to create an intentional communication/storyline between the people in the collages.





Bo  
Oliver

### **My Kastellorizo: Returning to Yia Yia's home** Painting

My body of work explores the reconnection that travel brings for not only my family but to everyone that I surround myself with. Particularly, through the use of portraiture depicting past photographs from my trip to the island my family is from in Greece called Kastellorizo as well as collages of photographs taken from the trip exploring the happiness and excitement. I was able to reconnect with friends and paternal family I hadn't seen for a few years, but I was also exposed to my family's culture by being surrounded by the unique place that much of my family comes from. The new experiences for many members of my family on the unique isolated Green island allowed me to create memorable memories that I embodied in the body of work. Through experiencing the bright and vibrant colours the small island embodied I wanted to mimic that through the visible brush strokes in the flesh of the figures.





Charley  
Hearne

### **Scream (MAD World)**

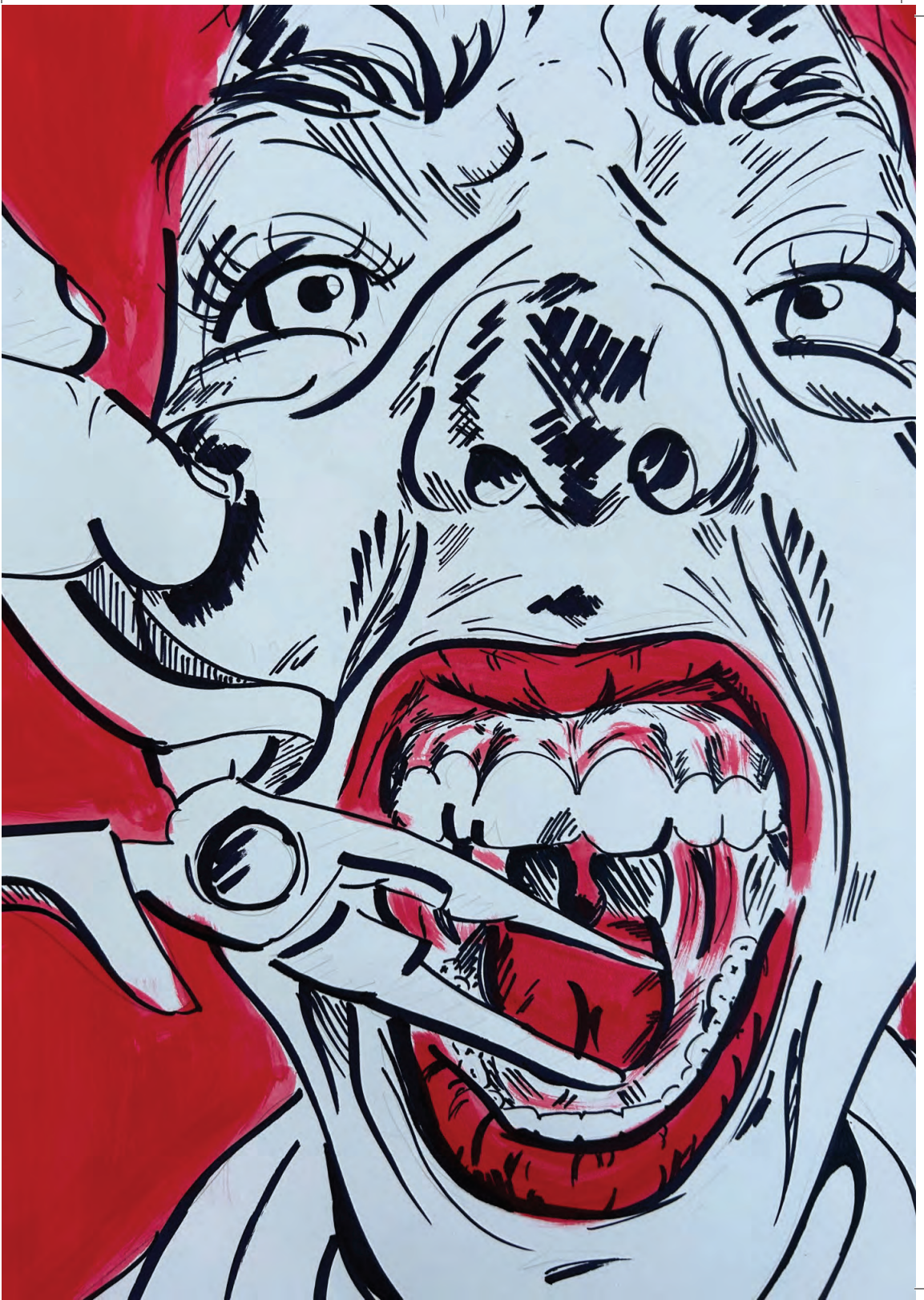
#### Drawing

From the moment we are born, we scream; a primal release. As vocalised channelling of intense energy, screaming can be both positive and sometimes negative.

Screams can be of joy and frustration, fear and elation. We scream for help when scared and we scream for more when excited. A scream is the explosive ignition; an internal alarm.

My work explores the concept of a scream as a motif for the confusion of creativity. My mind, thoughts and creative ideas race; desperate to escape.

My book and drawings have tried to capture the disorientation and unstoppable momentum of my mind. Artists that have inspired my drawing style are Ralph Steadman, Mort Drucker.





Cleo  
Baldwin

### **Empty Fields**

#### Photomedia

People work everyday. But some people have to work more than others, even if the outcome isn't relatively positive. I live on a farm in rural NSW and a major issue at the moment is labour shortage in Agriculture. This workforce crisis has led to many challenges for farming families and local rural communities. Minimal staff results in longer work hours to achieve a desired outcome. Empty Fields, explores the crisis of lack of workers in rural parts of Australia. This issue needs to be shed a light on. My major work is a series of photos which create an emptiness yet dramatic atmosphere, highlighting there are jobs to be done, but there is nobody there to do them. Within each of my pictures, I highlight the dull, hollow environment of which not a soul is around the landscape. Inspired by Australian Photographer Trent Parke, my use black and white editing together with close up, medium and long shots further convey the desolation and vacancy of the environment.





Cleo  
Lyon-Mercado

## Contemplative Sublime

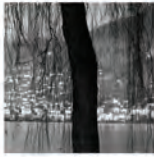
### Photomedia

*“The artist and the photographer seek the mysteries and the adventure of experience in nature.”*

- Ansel Adams

Nature, a subject that has long fascinated and inspired me, became both my subject and muse throughout my creative journey. Initially I explored specific elements of trees, magnifying them to highlight the intricate details that are frequently overlooked. The exploration of these finer elements led me to discover that each tree/landscape possessed its own unique character, and profound wisdom transcending human understanding, bridging the gap between the terrestrial and extraterrestrial realms.

They possess a serene resilience, adapting to the changing seasons, weathering storms, and serving as silent witnesses to the passage of time. Ultimately, my artistic pursuit of trees is an invitation for viewers to pause, to observe, and to connect with the natural world that surrounds us. Through my art, I aim to ignite a sense of wonder and reverence for these silent giants, encouraging a deeper appreciation for the beauty, resilience, and wisdom that nature embodies.





Elektra  
Kalantzis

**Dreamscape**  
Photomedia

My body of work focuses on the abstraction of elements of the female form that lack proper recognition, ultimately portraying the fluid yet at the same time definitive nature of femininity. Through exploring the idea of the female form as a landscape, manipulating the creative process as means to explore the psychological, I ultimately communicate the emotive power of colour, with images moving from warm toned nudes to striking blacks and contrasting whites. As such, the beguiling images walk a fine line between the abstract and the literal, reminding us of the female body's inherent power to transport us beyond the real to an experience of the sublime. Centring the female form as a vehicle of serenity and fluidity, my work generates the artmaking practice to interrogate the function of the female body in the modernised present day and the way in which contemporary perceptions distort the inherent vulnerability and fluidity of the feminine experience as a landscape that explores a multifaceted interrogation of female elements.



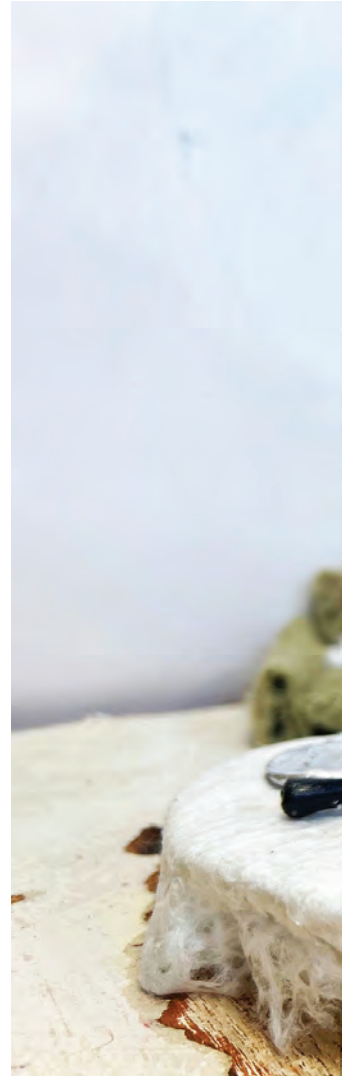


Hannah  
Montaser

### **The Haunt** Sculpture

*The Haunt*, is a playful but unsettling look at the home of an anonymous and absent artist. The absence of the subject invites the viewer to instead explore the derelict dwelling as a kind of surrogate personality. Using the hallmarks of true crime and contemporary gothic, I have created a curiously abandoned home that suggests the world of a creative phantom; the home of a soul that is both evocative and nostalgic.

The abandoned building embraces the comforting notion of lived-in familiarity while provoking ideas about past histories of artmaking. Each corner of the home provides clues of the resident's life and a creative personality that is gone without a trace.







Ilesha  
Gray

### **Connected, 2023**

#### Photomedia

My body for work is a collection of images with dot-paintings over top that reference my own experiences and my connection to country and identity. I am a proud Kamilaroi and Wiradjuri woman from Pilliga NSW. I have used the medium of black and white photography to capture imagery of my hometown Pilliga, where I grew up and spent most of my childhood before moving to Sydney to attend boarding school. These places I have photographed are meaningful places to myself. In my artworks I have interpreted my culture through incorporating contemporary dot-painting designs onto my photographic images. I don't have much knowledge of my culture, however, through my major work I have begun a journey of self discovery and aim to incorporate this through the dot-painting with acrylics over my imagery. The colours represent different emotions and connections I have with each location and memory. The handing down of stories and histories from old to young is a tradition that I have tried to capture in my works. I have titled my major work connected, as you can see I have interrupted my culture through my artworks with my country.





Jayde  
Novak

### **Stationary** Photomedia

Stationary is an exploration of the complex and dynamic interactions between individuals and their environment in urban spaces. With an emphasised eye for detail and a sensitivity to the nuances of light and shadow, I capture the rhythm and flow of people as they move through these bustling transit hubs, their faces, bodies and outfits communicating a range of emotions and experiences. Through the use of monochromatic photography, aiming to distil the essence of these moments, stripping away extraneous distractions and emphasising the timeless qualities of the scenes before me. By eschewing colour, I am able to focus on the interplay between light and dark, line and shape, texture and contrast, revealing the inherent beauty of the everyday and elevating the mundane to the realm of the sublime. Capturing the essence of the human experience as it unfolds in these busy and often chaotic spaces. From the hurried rush of commuters to the quiet contemplation of a lone traveller, each person is a protagonist to their own story, contributing to the rich tapestry of the urban landscape. I strive to document these moments, inviting viewers to reflect on the beauty and complexity of the world around us.

The development of my artmaking practice has been intricately intertwined with examination and interpretation of renowned artists Robert Frank, Rui Palha and Henri Cartier-Bresson.





Jemima  
Salt

### **Disastrous Woman**

#### Photomedia

The Archetype of the 'Femme Fatale' has existed in the western canon since the beginning of time, where the dissembling woman has brought 'good' men to their knees. When the woman has fulfilled her role catalysing the tragic downfall of the protagonist, she is removed from the story and silenced. This photo series entitled 'Disastrous Woman' contemplates the narrative trajectory of the Femme Fatale, posing one overarching question: when her desirability wears off, what happens next? Featuring eight minimalist still life images the artist utilises subverted iconography of a range of classic symbols of sex, decaying. These sleek images contrast the shadowy, monochromatic central portrait. The 'Femme Fatale' lies lonely on the floor, entangled with a serpent, her striking gaze demanding the viewer's conscience.





Lizzie  
Ricardo

**Desert, Darling**  
Painting

My work is a playful exploration of the extremes of beauty in a hostile land. I have taken the female figure and pushed it towards a caricature of improper beauty myths. Features and forms are distorted or enlarged, emphasising the way we prioritise style over substance.

Pattern and decoration are markers of conspicuous consumption. The motif of the desert as sparse and barren territory, contrasts the saturated, commercial and faceless figures.



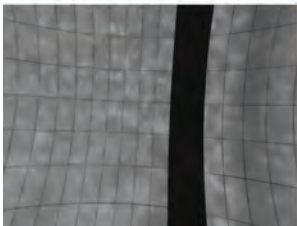
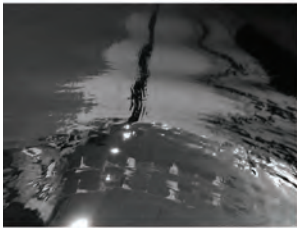


Lily  
McCowan

### **Beyond the black line**

#### Photomedia

My work aims to exhibit the surreal and tranquil world of swimming, which is often overlooked in traditional photographic representation. Being an elite swimmer and spending so much time in the water myself, I was consumed by this idea of the 'black line' being confined to the construct of boredom, as often people think of swimming as just staring at a line on the bottom of the pool. As I started to think about my major work, I slowly started taking notice of what I actually see when I'm swimming, being a whole lot more than just a black line. While conventional swimming and sports photography is largely athletic, they fail to capture the experience or offer insight to the world around the athlete. I have utilised a form of self-portraiture to offer my point of view and capture the unseen while offering the audience a chance to experience the dramatic and surreal underwater realm in which I have become infatuated with. The water allows for natural distortion and reflection while my black and white transition within the display further explores the surreal of a perhaps very un-surreal environment. This process was largely uncontrolled and experimental. The camera, strapped to my body, was left undisturbed to capture one photo every few seconds whilst I went about my training. Leaving me with completely unplanned, unique and ambiguous images.





Lulu  
Joye

### **Domestic Goddess**

#### Collection of Works

My Body of Work titled “*Domestic Goddess*” explores the unhealthy performativity of gender roles and how things are not always as they seem. The work consists of 6 photographs of the ideal housewife going through her daily, from 6 AM- 8 PM. Accompanying this are 6 laser cut cameos containing different objects, as well as 6 photograms engraved with text. This examines how the performance of gender roles such as femininity does not signify the performer’s happiness and the confinement to stereotypes may ultimately be unhealthy. The work represents this as though the activities the persona does- baking, laundry etc.- may be beautiful signifiers of femininity, if the viewer looks closer there is something unsettling beneath the surface. The culmination of this is the death of her cheating husband, as the repressive role she has been confined to causes her to lash out in anger.





Meg  
Stratton

### **The Blue Tree Project**

#### Photomedia

Drought, bushfires, floods, what's to come next? Farmers battling these challenges often endure mental health struggles, yet the stigma surrounding men's emotional expression makes it difficult for them to open up about their well-being. Through "The Blue Tree Project," I aim to shed light on this unspoken issue of men's mental health. By capturing the image of a dead tree resembling a cross on the outskirts of my country town, Coonamble.

Taking inspiration from the Blue Tree Project, which promotes people to speak up about mental health concerns, I worked with members of the Carinda Road community to paint the tree in a vibrant blue colour. This lone tree stands as a reminder to anyone passing by that it is okay to not be okay and encourages them to speak up about their struggles.

By highlighting the struggles faced by farmers and the universal nature of mental health challenges, I aim to dismantle the stigma that prevents individuals from seeking help. My work serves as a visual representation of this stigma, reminding us that our inner struggles deserve attention and understanding. Together, we can create an environment where expressing emotions is celebrated, ensuring that no one suffers in silence.





Mila  
Folsom

### **Down the Line** Sculpture

My works explore the concept of nostalgia and innocence within a series of symbolic ceramic vessels; each carrying an individual or collective experience. The sculptures suggest domestic love passed down (physically and symbolically) through my family.

The subversion of the traditional historic vessel is transformed into a satirical expression of modern life and identity. The bright colour palette and use of naive and childlike engravings, portray happiness and the idea of a lunchbox as a spontaneous present which friends and family contribute to.

The vessels were inspired by the playful storytelling in Grayson Perry's ceramics and techniques of the Hermannsburg potters. Each was created impulsively, guided spontaneously by instinct and familiarity, rather than adhering to any predetermined design.





Nate  
Teen

### **Yoothamurra**

#### Collection of Works

In my work '*Yoothamurra*' I have depicted my mother's family farm in Western Australia. The farm has been a part of my family for many generations and my works symbolise the importance of memories held within it. I have chosen to express my nostalgic view of Yoothamurra with primarily painting and elements of drawing to complement the compositions.

Using old timber, linen and found objects, I have incorporated text and numbers, symbolising my grandfather's initials and date of birth. I have also included text references to my siblings who also have a connection to Yoothamurra. Each artwork is quite different, but all are linked by imagery of this important piece of my family's history.





Olivia  
Johns

### **The Scream: We have received orders to remain silent** Visual Arts

My artwork, titled “*The Scream: We Have Received Orders to Remain Silent,*” delves into the depths of human emotion and the struggle to express oneself in a world that demands silence. Through a combination of expressive techniques, I aim to evoke a profound sense of unease, vulnerability, and suppressed anguish. The central theme of my artwork revolves around the concept of enforced silence, symbolised by the figure in the foreground, whose contorted expression and wide-open mouth reflect a desperate yearning to release pent-up emotions. This figure represents not just an individual, but a collective voice. A voice that has been silenced, oppressed, or muted by external forces. It is a visceral portrayal of the frustration and powerlessness experienced when one’s thoughts, opinions, or emotions are stifled.



SPEED + MOVEMENT

THE FIVE

STAYING IN THE MIDDLE

PERFORMANCE START MOVING

TO BE

THE FIVE  
STAYING IN THE MIDDLE  
PERFORMANCE START MOVING



Olivia  
Okkerse

### **Under Construction**

#### Photomedia

My body of work explores the complex notions associated with self esteem and how individuals value themselves based on appearance. In my work I gave my subjects choice in how they wanted to destroy/ vandalise their portrait. This process was highly significant as it reflects my concept and is symbolic to the truth behind my work. Under Construction aims to explore the key themes of identity and the rediscovery of one's identity through the process of manipulating what was once a perfect image. The destruction of each image aims to reveal that before the photo had undergone the process of destruction it was in its most perfect form, a reflection of beauty not being subjective and showing itself in different ways. My work holds a greater meaning and intends to be questioned and inspire thought from the audience.

Key artists who have influenced my artmaking practice are Frida Khalo and Barbara Kruger.





Peta  
Vassallo

## **Recollections of Girlhood**

### **Painting**

This body of work features a variety of small-scale oil paintings, drawing the audience in to focus on intimate moments of the female experience and celebrate a sense of delicate femininity. Each work focuses on a mundane candid moment of the female experience of being a teenage girl with moments and memories of feminine connection and sisterhood. Cropped perspectives and small-scale canvases are utilised to subtly allude to this conceptual intent. The subdued colour scheme of these works in conjunction with visible brush strokes exposes evidence of the artist's touch creating a softness, and sensitivity adds to the sense of intimacy in the collection. The inclusion of everyday symbols of femininity portrayed in a delicate and highly rendered oil painting style captures the personally relevant nature of this collection illuminating feminine connection and subtlety in fine detail. This body of work draws from the influences of American impressionist Mary Cassatt and film director Sofia Coppola who depict a deep sense of intimacy and femininity within their respective art forms.





Pia  
Katasabaris

### **The Voyeurs**

#### Collection of Works

My Body of Work titled *The Voyeurs* involves 4 circular canvases which portray the faces of young women in oil paint which stare down at the viewer, as well as 4 small-scale pencil drawings on paper depicting voyeuring close-ups. My collection of works explores the way art is critiqued, by flipping the voyeuristic gaze upon the viewer. Additionally, a double meaning is created by centering exclusively young women, creating a commentary on the ways in which women are observed, surveilled and critiqued in patriarchal society; Yet, here this observation is reflected upon the viewer by the women. The gestural painting style and vivid colour palette is influenced by Kirchner's expressive brushwork and vibrant hues which characterised the German Expressionist period (1910s-1930s). Additionally, pencil-drawings have been incorporated, transferring the idea of the voyeur into a second medium.





Rebecca  
Caplan

### **The disposable wall of memories, 2023**

#### Photomedia

My body of work is an exploration of the teenage experience. Many things can change in the world, just as the experiences that will change as we grow old. That's what I wanted to explore in my photography. For example, going to parties, getting your P's, going to the beach with friends, just chilling with your dog, being silly and making mistakes, this is all part of the teenage experience. But there is also unperfectness, rawness about emotion and the human experience and discovering who we are, and that is what I tried to capture. By using multiple 35mm colour disposable film cameras to capture the raw authentic and unedited teenage experience, I hope to convey a sense of nostalgia not only for the technology used, but the memories we will reflect upon as we grow older.





Sophie  
Ferguson

### **Cumboogle, 2023**

#### Photomedia

My body of work aims to explore and celebrate my family property Cumboogle and the many varied aspects of this farm life. As a boarder when I am living in the city away from home my mind is often drawn back to the warm inviting sunsets and happy memories of this place I call home. One such memory is during harvest time when I help take meals to my dad while he is working, as there is a lot of work that goes into producing a crop and harvest time is especially busy for all those working the land. Being a family business, there is a lot of heart and soul that goes into everything on the farm. I hope my imagery conveys not only the nostalgia I have for my farm life but also the vast beauty and complexity of the landscape and the crops that we work so hard to produce each year.





Taliah  
Strang

### **Pluto and Charon**

#### **Time- Based Forms**

‘Pluto and Charon’ aims to address a question that I find increasingly troublesome; “*Are we the same person we were when we were 5?*”.

Explored through the anonymous ‘Astronaut’, I draw from personal inspiration based on my childhood dream to explore the universe. My use of video is used to disregard the traditional teleological structure, instead fluctuating between a variety of different stages ‘Astronaut’ experienced to represent my nostalgic psychological distress, and ultimately make the audience question their own grapples with growing up. ‘Pluto and Charon’ are known as the Milky Way’s only double planetary system. They both rotate around each other, while perfectly reflecting each other. They both rely on the other, however they don’t appear to look the same, symbolic of the message I’m trying to convey. I ended my video with the same clip I opened with, decreasing saturation embodies the idea that when we are to return to the harsh reality that we must let go of our childhood dreams, yet we can find solace in returning to our optimistically vibrant hopes and dreams.





Tayah  
Riley

### **Family**

#### Collection of Works

My body of work is a collection of images and objects that reference my own experiences and my connection family and country. I am a proud Kamilaroi girl from Quirindi NSW. I used the medium of black and white photography to capture both the elders and the young people of my home. The handing down of stories and histories from old to young is a tradition that I have tried to capture in my works. This series was photographed in my hometown of Quirindi.

My sculptures are hand painted ceramic Coolamons which are typically timber and traditionally used in Aboriginal culture by Aboriginal women to carry water, fruits, nuts, as well as to cradle babies.





Willow  
Wilson

### **Threads that bind: tracing my Ukrainian Heritage** Painting / Collection of Works

My Body of Work titled '*Threads that bind: tracing my Ukrainian Heritage*' captures memories and moments, both past and present, that trace back to my Ukrainian heritage. The works situate my family's Ukrainian heritage within the minutiae of present experience: the act of stitching, the traditional Ukrainian *vyshyvanka*, or simply a tomato (помидор) and garlic (че-снок) used for a bowl of borscht. The collection of small-scale works creates an intimate world fostering a sense of transportative nostalgia by recycling and providing meaning to objects that have been overlooked and forgotten; the vintage tin, transforms the traditional canvas, evoking notions of mystery and narrative underpinned by memory. My use of thread critically binds together culture and family, history and memory, bringing to life the souls and stories depicted.



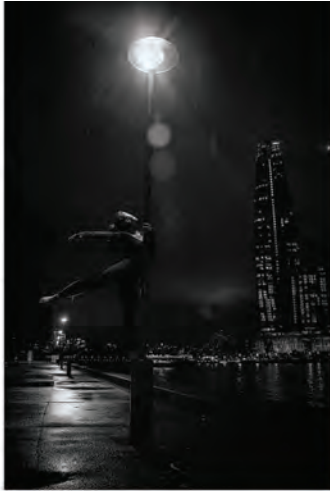


Zara  
Psirakis

### **City Pulse** Photomedia

City Pulse, explores the mesmerising fusion of dance and urban environments. Through the lens of my camera, I seek to capture the dynamic energy and captivating beauty that emerges when dance intertwines with bustling streets, towering buildings, and vibrant cityscapes. The city serves as both backdrop and partner, providing a compelling contrast to the graceful movements of the dancers. The city becomes a stage, inviting dancers to express their artistry amidst the hustle and bustle of everyday life. Through my photographs, I aim to convey the stories that unfold when movement meets the urban landscape. Each image tells a tale of urban rhythm, where bodies gracefully navigate the contours of the city, responding to its architectural lines and absorbing its pulsating energy.

In City Pulse, I celebrate the diversity and creativity of dancers who find inspiration in the urban setting as they transform different locations into their own performance spaces, and, through my accompanying video work, aim showcase the strength, resilience, and passion of these artists in their home, the studio. Through my photography, I hope to ignite a sense of wonder, inviting others to perceive the city with a renewed perspective, where the ordinary becomes extraordinary through the lens of dance.





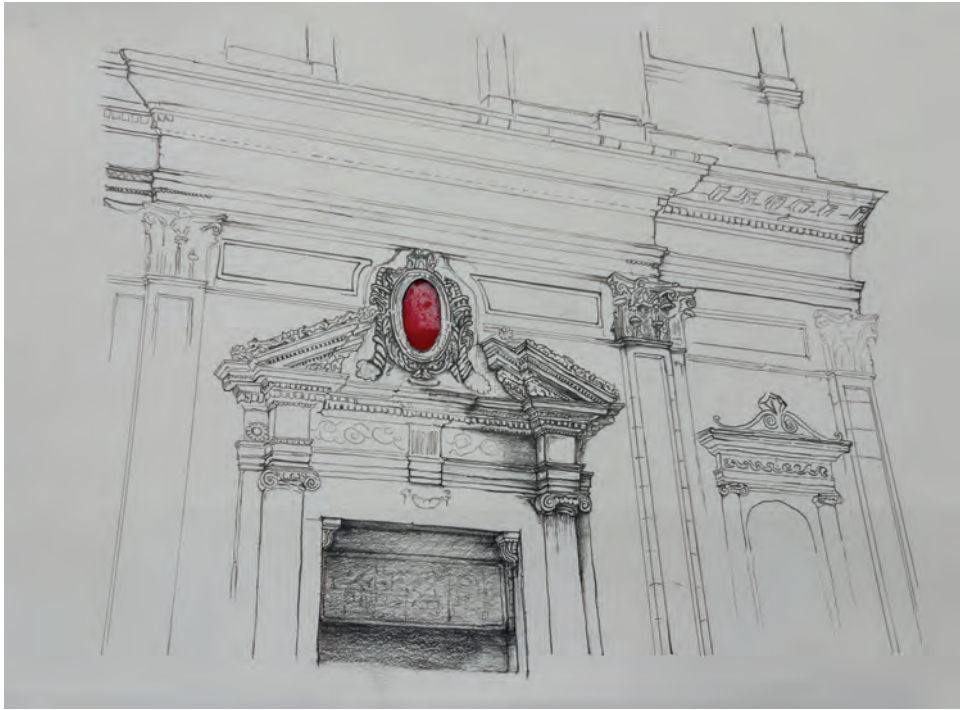
Zoe  
Dyson

## **Blood and Stone**

### Drawing

My work explores the inextricable connections between buildings past and present, as both vessels and landmarks of time. Buildings exist as monumental physical frameworks, shrines that capture past times and memories within their stone walls.

My drawings suggest the buildings as connected to human physicality and experience; they thrive with the lifeblood of our creativity that pumps through their foundations. The fragmentation of colour and detail represents both the dissolving passage of time and the everlasting threads of life that remain.





INTERNATIONAL  
BACCALAUREATE ART



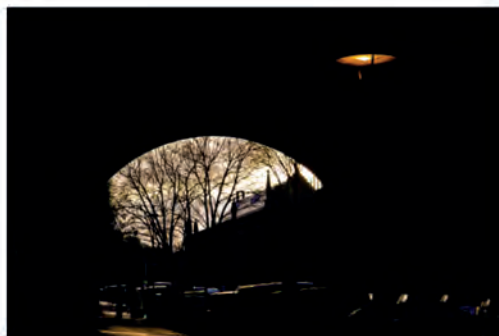
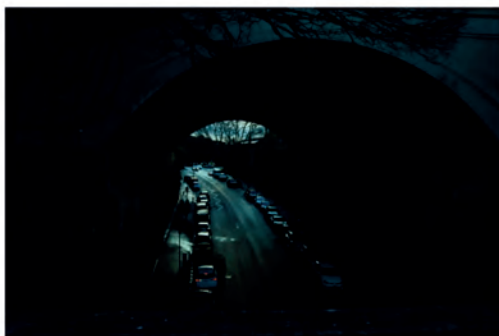


Amber  
Hoddle

### Collection of works

My body of works consists of a range of artworks that explore material experimentation in photography, printmaking, acrylic painting, ceramics, and photo media. My artworks are all individual pieces, however, as a body of work, they represent similar ideas relating to the universal experience of developing, defining, and deconstructing identity. I have investigated a range of themes and made connections to artists that I have studied in the Visual Arts course, such as Andy Warhol, Annegret Soltau, Bill Henson, and Giorgio Morandi.

I created photomedia works to explore unique approaches to portraiture, with an emphasis on distortion. My paintings investigate abstraction within landscapes, thus depicting the deformity of the natural world. I explored screen-printings and examined the concept of pop art, which thus comments on the commercialisation and falsification of identity in the modern day. Finally, my ceramic sculptures investigate the unique nature, and further, the deterioration of identity.





Brooke  
Schreck

### Collection of works

My works are comprised of ceramics, collage, photography, video, drawing and printing. My works investigate how culture, heritage, and family relate to themes of empathy and understanding. As inspiration, I've investigated a range of artists such as Mike Mills, and Alberto Giacometti. My ceramics explore the disconnect from our identity, specifically our culture. My video, photos and screen prints highlight the chaos of identity by exploring abstraction that blurs meaning via abstract graphic elements. My drawings highlight the experiences that I've had and the different ways in which I've been able to see the world. Additionally, my collage explores heritage and my family's stories, and the life they've led. Investigating the ways in which identity is formed and how it makes us feel; each piece explores the theme of identity differently, representing how different we are from each other and how personal our identity is to us. My exhibition highlights the realms of identity as endless and complicated. Beauty comes from not knowing who we are.

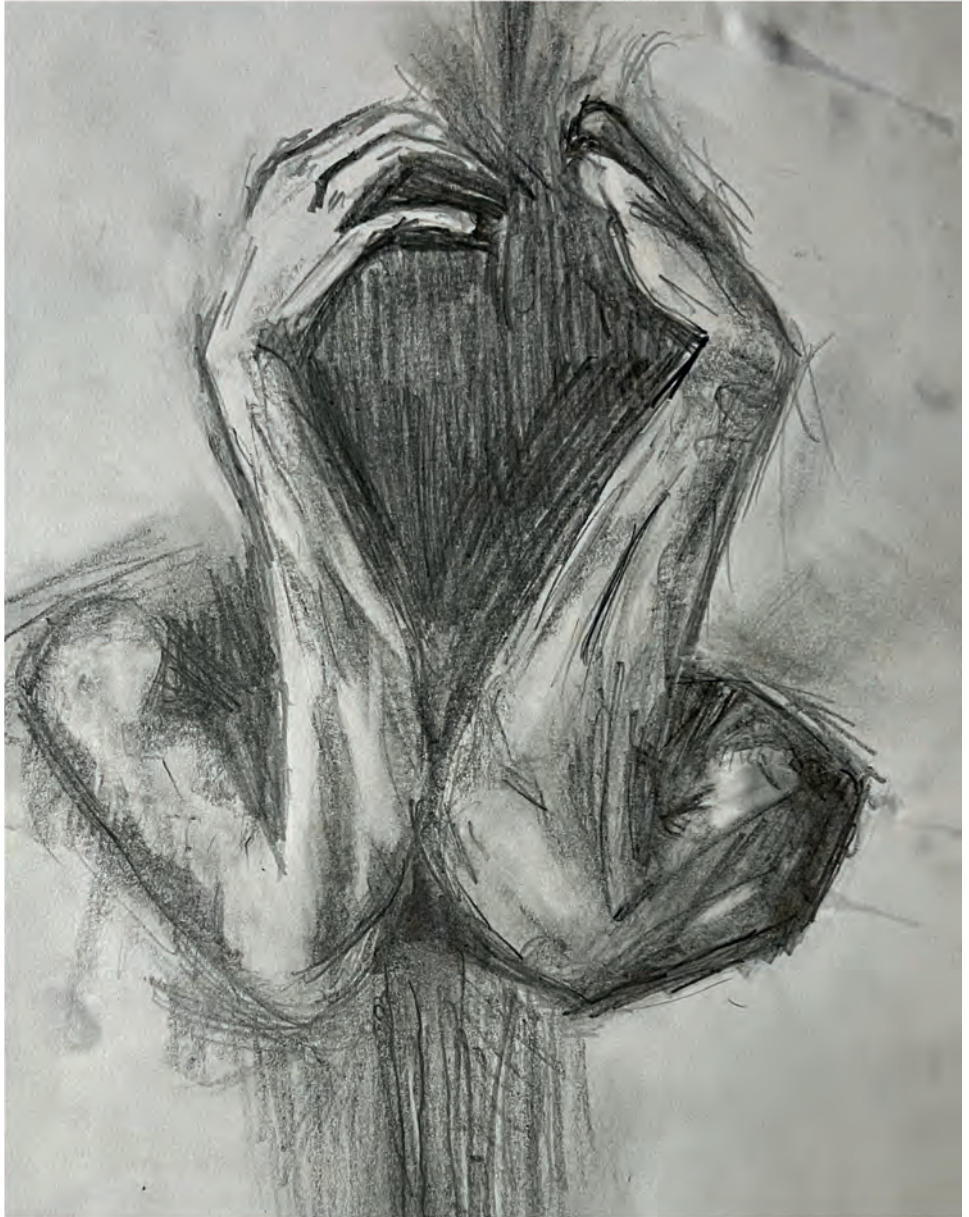




Chuo Shan (Kylie)  
Zhang

### Collection of works

My body of works consists of artworks that explore material experimentation in photomedia, video and sketching. My overall theme stems from exploring the beauty and complexities of intangible human emotions through my personal tangible experiences, accompanied by quotes taken from my own written diary or poems. Each artwork is individual yet together they create a diverse and colourful vessel of the human psyche. I have investigated and made connections to many different artists, such as Cindy Sherman and Gregory Crewdson. My pieces focus on portraiture, utilising the possibilities of the human features to express specific situations that convey feelings of ecstasy, anxiety and more. The use of lighting, colour, makeup and props ultimately bring together and evoke effectively the messages that lie within my artworks.





Crystal  
Xin

### Collection of works

I have chosen to explore aspects of the human condition for my artworks, mainly focusing on different emotions. They are conveyed through artworks including ceramics, paintings and photographs, by directly showing the daily human expressions, or through an abstract meaning in an artwork.





Phoebe  
Romeo

### Collection of works

My art exhibition consists of a range of artworks in the materials of drawing, painting, digital art, photography and sculpture.

Together, my works seek to represent the home of my childhood; the places where I spent my younger years through the lens of my younger self. The vibrant colours and themes of imagination, reminiscent of the child's mind. Having a form of synesthesia, I also attempt to represent my mind's subconscious associations between people, place and colour, which were particularly strong during my early childhood.

Artists which I have made particularly strong links to in my work include Keith Haring, Bill Henson, CJ Hendry, and Chuck Close.

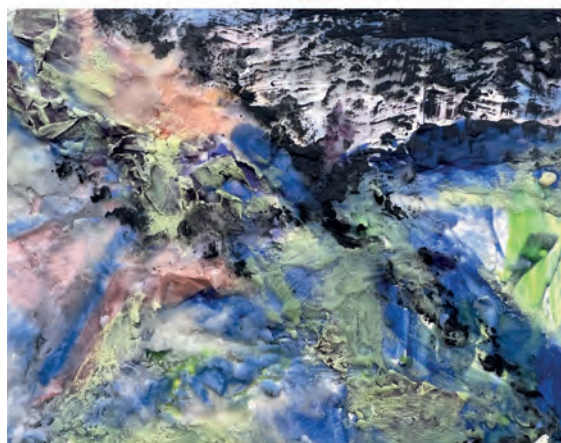


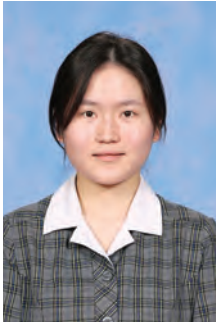


Yuhan  
Tang

### Collection of works

My works explore a range of different material practices to investigate extremes of realism and also abstraction. In my artmaking I approached the practice of free experimentation as the focus of my creative work. Printmaking and painting were particular interests and scope of the IB has allowed me to explore a wide variety of expressive forms.





Yujie (Sophia)  
Song

### Collection of works

Nature is not only a source of life, but also an interconnected, mutually influencing, harmonious and unified whole with human beings. Human beings is a part of nature, and we cannot exist without nature. The harmonious coexistence of human and nature is the basis of all kinds of harmonious relationships. In the course of human social history, nature has become its own antagonist as a result of the advancement of human self-awareness and thinking. Along with the increase in people's ability to transform nature, the desire of human beings to control and conquer nature has become stronger and stronger. However, I am going to explore the other way of relationship of human and nature which is human co-exist with nature, a better way to interact with nature through symbiosis, mutual benefit and co-evolution. Thus, In this collection of artworks, with the love of nature and concern for human beings as the starting point, I express my thoughts and feelings about the beauty of nature and the symbiotic relationship between human beings and nature through various forms such as painting, photography, ceramic and printing.





# KAMBALA

794 New South Head Road  
Rose Bay NSW 2029, Australia

+61 2 9388 6777

[info@kambala.nsw.edu.au](mailto:info@kambala.nsw.edu.au)

[www.kambala.nsw.edu.au](http://www.kambala.nsw.edu.au)

